

Instructions for making a mask with channel elastic

Revised 15.11.2020

The pieces you should have in your kit are:

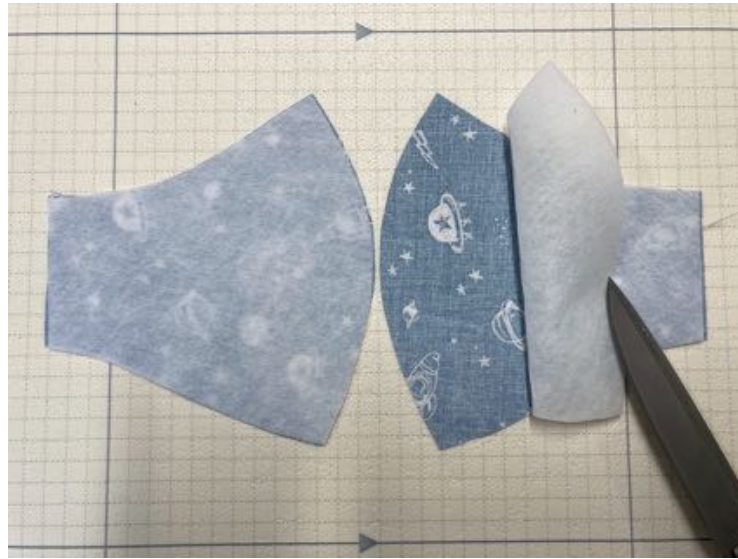
- 1 × nose wire 24cm long
- 2 × pieces of elastic 20cm long
- 2 × outer mask fabric
- 2 × interlining fabric
- 2 × lining fabric

All **seam allowances** are 1 cm



1. Take **1** piece of the interlining fabric and place it on the wrong side of **1** piece of the outer fabric.

Repeat with the other pair of outer and interlining fabric.



For the purposes of this mask, the outer fabric and the interlining will from now be treated as one

2. Join the centre front seam in the outer fabric/interlining pair, placing the right sides of the outer fabric together.

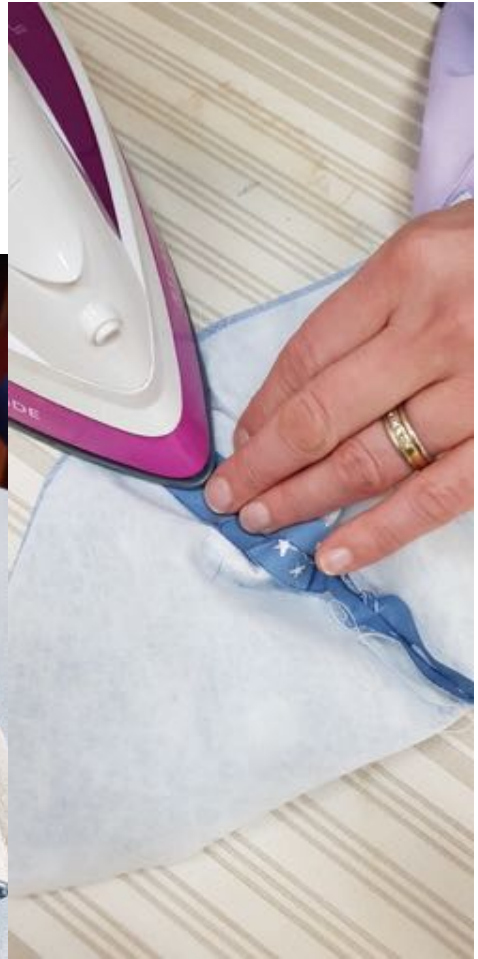




3. Place right sides of the lining fabric together and join centre seam.



4. Trim interlining inside seam allowance and press seam allowances open



5. Place the outer fabric/interlining piece on top of the lining with right sides together. Ensure all raw edges line up around the perimeter of the mask and the centre front seams match.



6. Sew the top and the bottom edges together, keeping both ends open.



7. Turn the mask right side out



8. Press the mask



9. Either stitch a 5mm channel for the wire along the top (more pointed) edge and push the wire through.
OR
Insert wire along the top edge, then, using zipper foot, top stitch at 5mm to hold wire in place.

Then top stitch the lower edge of the mask the same 5mm distance from the edge.



10. Overlock or edge stitch the raw side seams to prevent fraying.



11. Either lay the elastic along the side seam and turn over 1cm and top stitch to make the channel OR Top stitch the channel (1 cm) and thread the elastic through.

Join the ends of the elastic together and pull join inside the channel



