

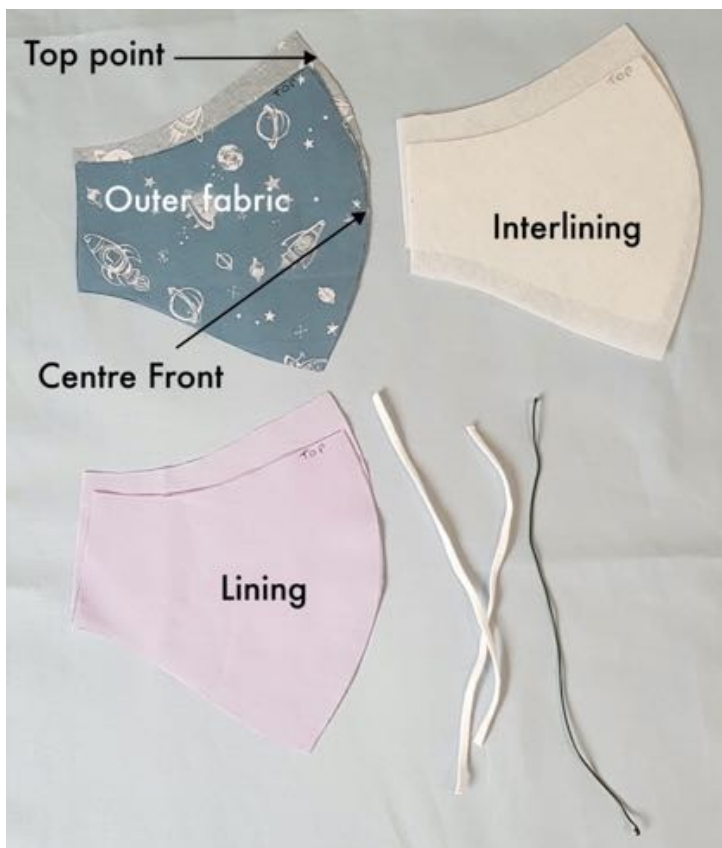
# Instructions for making a mask with attached elastic loops

Revised 15.11.2020

The pieces you should have in your kit are:

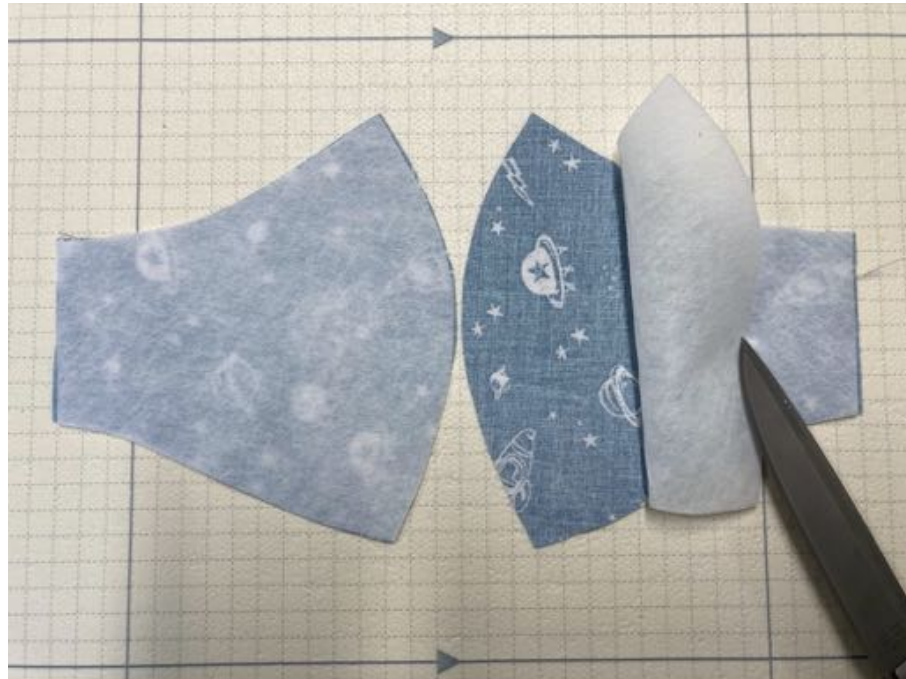
- 1 × nose wire
- 2 × pieces of elastic
- 2 × outer mask fabric
- 2 × interlining fabric
- 2 × lining fabric

**All seam allowances are 1 cm**



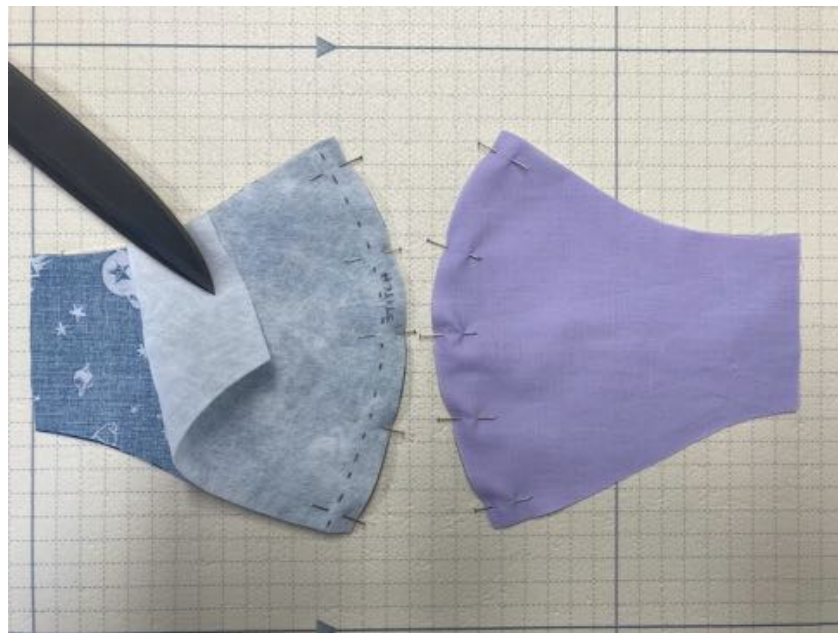
1. Take **1** piece of the interlining fabric and place it on the wrong side of **1** piece of the outer fabric.

Repeat with the other pair of outer and interlining fabric.



*For the purposes of this mask, the outer fabric and the interlining will from now be treated as one*

2. Join the centre front seam in the outer fabric/interlining pair, placing the right sides of the outer fabric together.





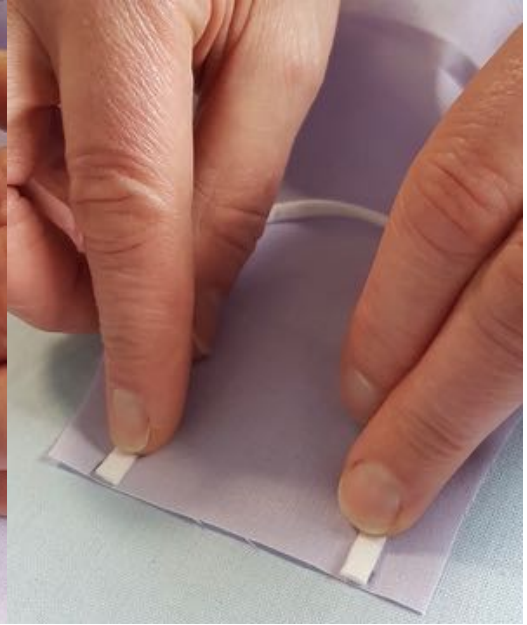
3. Place right sides of the lining fabric together and join centre seam.



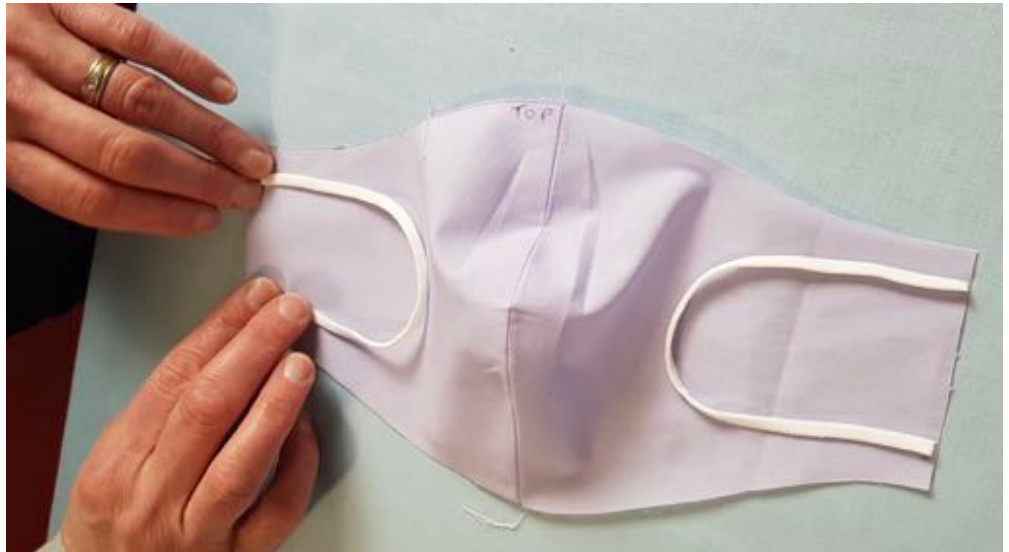
4. Trim interlining inside seam allowance and press seam allowances open



5. Place lining fabric right side up and mark 1cm in from the top and bottom edge of the short seam to mark placement of elastic.



6. Take one piece of elastic and making a "C" shape attach each end with a few 1cm zig zag stitches to secure in place within seam allowance.





7. Repeat with second elastic piece on the other short end.



8. Place the outer fabric/interfacing piece on top of the lining with right sides together. Ensure all raw edges line up around the perimeter of the mask & the elastic loops are sandwiched between.



9. Pin through all layers at the corners to keep them in place

10. Sew one side, the top and the bottom edges together, keeping one side open. Take care not to catch the elastic straps in any of the seams.
11. Reinforce stitch the elastic within the seam allowance



12. Turn the mask right way out & gently push the point of scissors into the corners to make them sharp.



13. Press the mask



14. Insert wire along the top edge, hold in place with a couple of pins, then, using zipper foot, top stitch at 5mm to hold wire in place.



15. Top stitch the short seam closed & bottom edge



16. Turn under the 1cm seam allowance on the short open & edge stitch to finish mask

