

# Instructions for making a mask

*Thanks to Alex Voice for diagrams and Belinda Musgrave for photos  
Revised 28.07.2020*

---

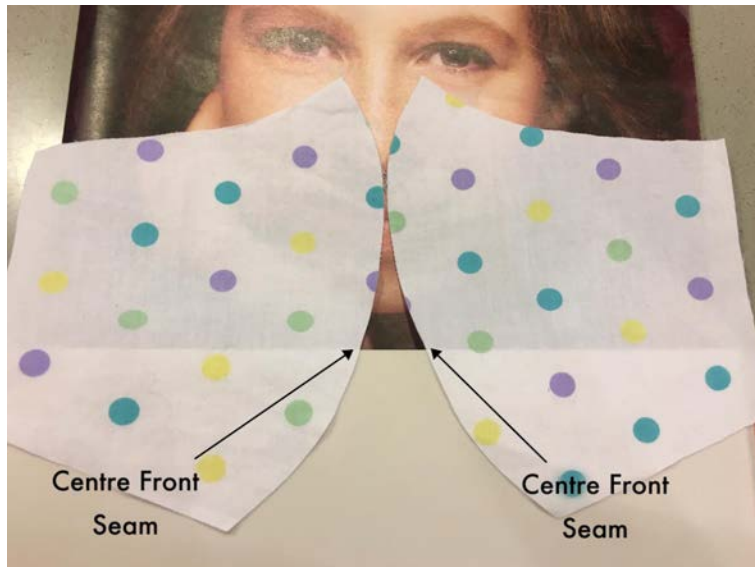
The pieces you should have in your kit are:

- 1 × nose wire
- 4 × pieces of tape for ties
- 2 × outer mask fabric
- 2 × interlining fabric
- 2 × lining fabric

All **seam allowances** are 1 cm

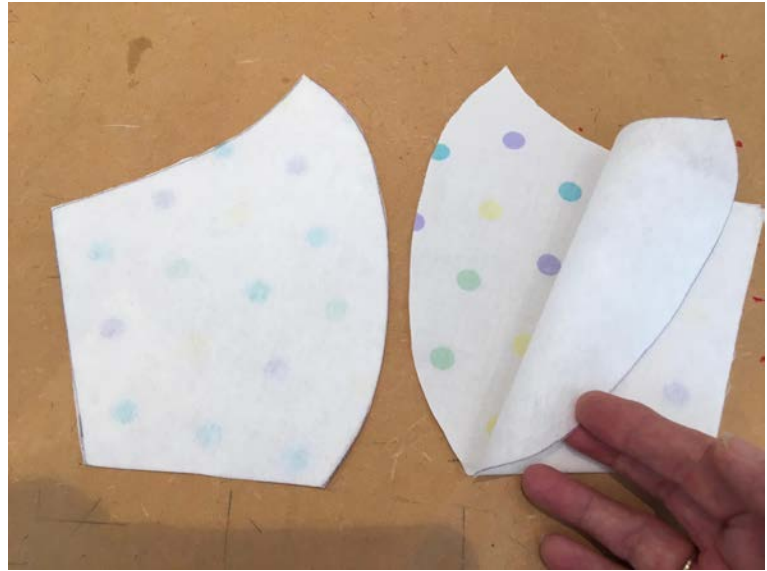
---

Orient yourself first. Find the centre front seams...



1. Take **1** piece of the interlining fabric and place it on the wrong side of **1** piece of the outer fabric.

Repeat with the other pair of outer and interlining fabric.



*For the purposes of this mask, the outer fabric and the interlining will from now be treated as one*

2. Join the centre front seam in the outer fabric/interlining pair, placing the right sides of the outer fabric together.





3. Repeat step 2 for the lining.



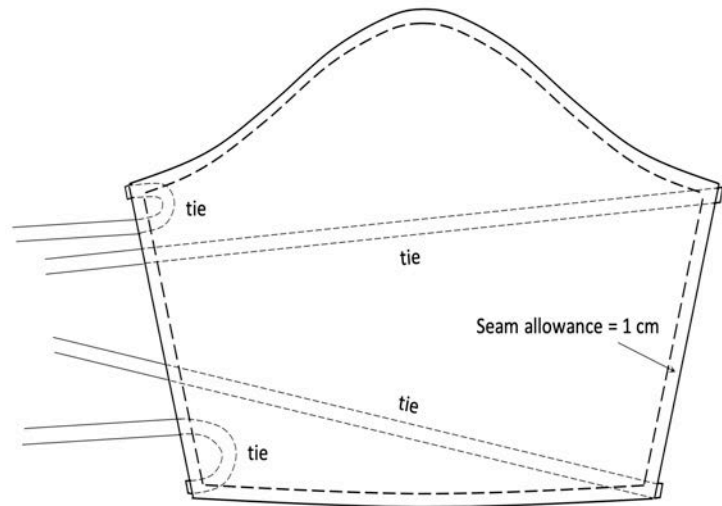
4. Press the seam allowances open and trim the interlining.





5. Place lining fabric right side up.

6. Pin 2 tape ties on the corners of the right-hand side matching to the raw edge of mask, and with ties running across the lining fabric, i.e. extending to the left.



7. Pin the second pair of tie tapes in place on the left-hand side of the lining, and curl ties around towards the left, as this will be the side of the mask left open for turning.



8. Place the outer fabric/interlining piece on top of the lining fabric right sides together, ensuring that raw edges line up all around the perimeter of the mask and that the two tie tapes are 'sandwiched' between them.



9. Pin through layers and tie tapes at the corners to keep them in place.

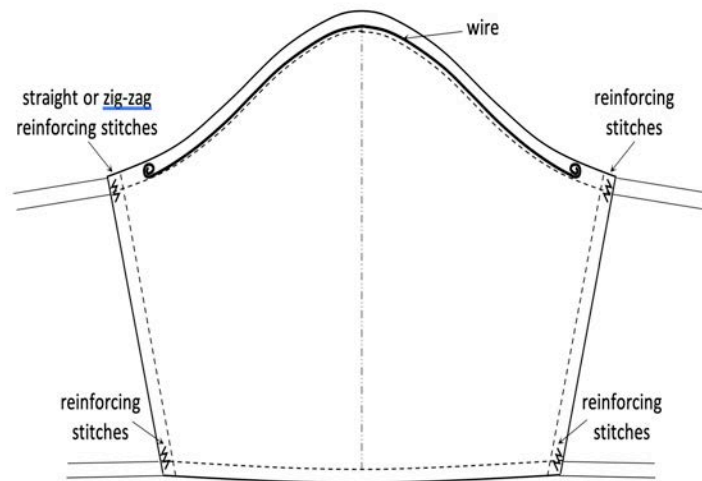


10. Sew around the mask leaving most of the left-hand side open bar the corners where the tapes are secured. Ensure that none of the ties are caught in the seaming apart from at the ends where they are being secured.

11. Turn the mask right side out, pulling on the tapes to make sharp, neat corners.



12. Press, turning in seam allowance on left-hand side of the mask.





13. Insert wire across the top of the mask and, while holding in place, edge-stitch around the entire mask enclosing the wire across top and closing the left-hand side of the mask in the process.



14. Reinforce stitch on the mask where the tapes are held in place.



15. Turn the ends of the tie tapes and stitch to neaten to prevent fraying.

